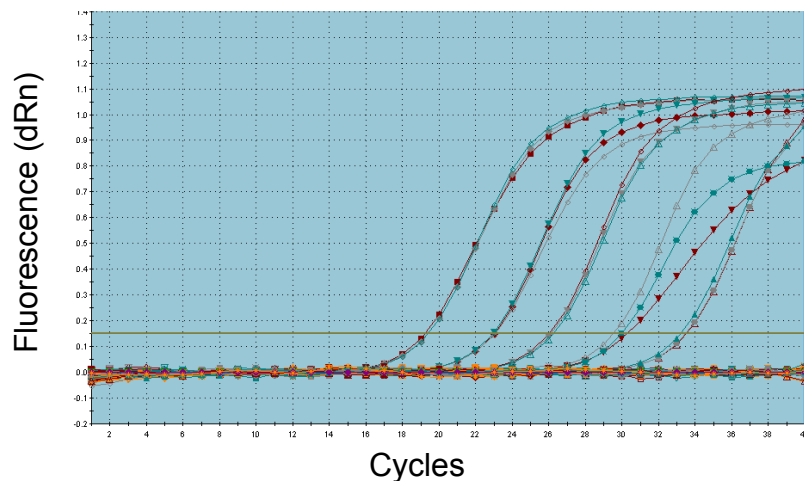
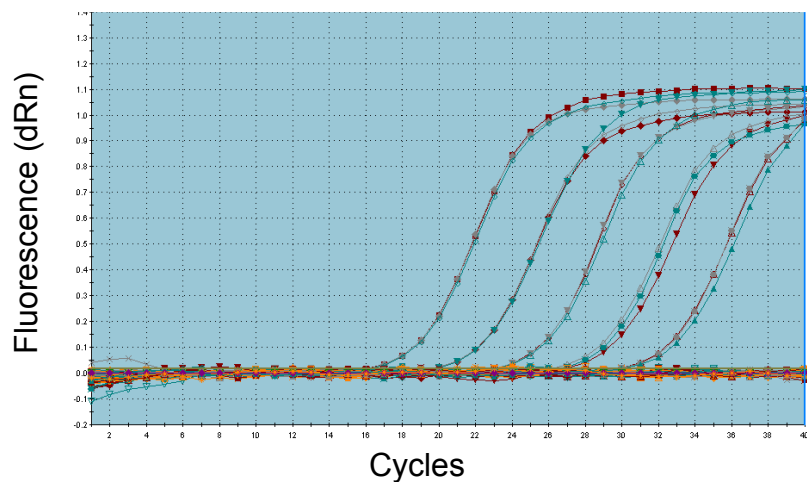


LightOne™ qRED Amplification Plots



Control Experiment Amplification Plots



# LightOne™ qRED



Order one today, LightOne tomorrow!

Cat.No.	Description	Status	US List Price
LI-1300	LightOne™ qRED Includes LightOne qRED unit, foot pedal, viewing stand, adapter frames	In Stock!	\$399.00

Bringing Confidence  
Well by Well

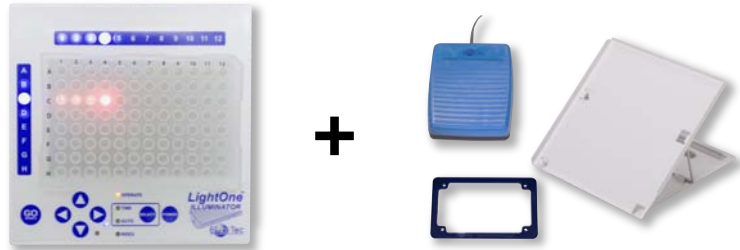


www.embitec.com 1-858-684-3190

LightOne™ is a trademark of Embi Tec. Embi Tec® is a registered trademark of C.C. IMEX.

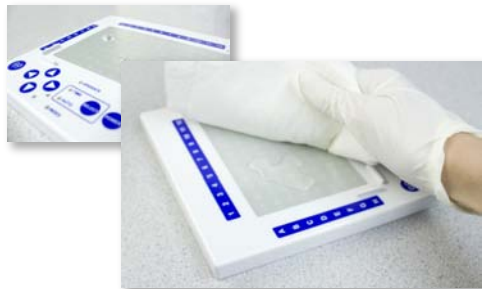
LightOne™ qRED is specifically designed for setting up real-time PCR. Red LEDs illuminate the wells and eliminates bleaching out fluorescent dyes used in real-time PCR

- Why buy accessories?  
Foot pedal, Viewing stand, Adapter frame comes standard with the unit.

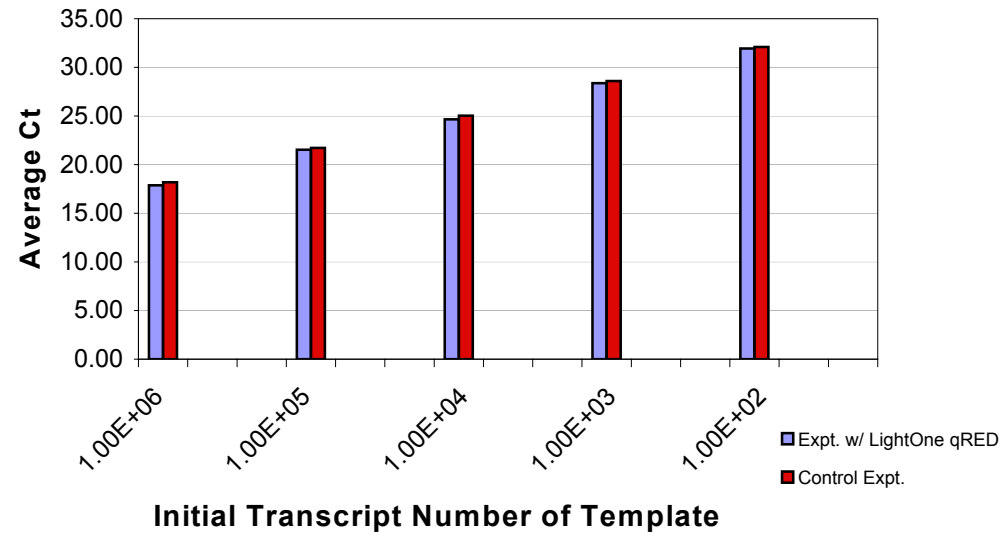


- GPS for your 96-well plate  
Track and see which well you are on and know which well(s) you are pipetting next.

- Spill proof and easy cleaning  
One piece membrane overlay provides smooth, clean surface that is water resistant and easy to clean.



## LightOne qRED Real-Time PCR Amplification Data



Wells Averaged	Experiment with LightOne qRED	Average Ct	Initial transcript # of template	Target Gene	Assay
A1, A2, A3	plate #1: LightOne qRED qRTPCR data	17.86	1.00E+06	IL-6	SYBR
A1, A2, A3	plate #2: Control qRTPCR data	18.19	1.00E+06	IL-6	SYBR
B1, B2, B3	plate #1: LightOne qRED qRTPCR data	21.52	1.00E+05	IL-6	SYBR
B1, B2, B3	plate #2: Control qRTPCR data	21.72	1.00E+05	IL-6	SYBR
C1, C2, C3	plate #1: LightOne qRED qRTPCR data	24.65	1.00E+04	IL-6	SYBR
C1, C2, C3	plate #2: Control qRTPCR data	25.05	1.00E+04	IL-6	SYBR
D1, D2, D3	plate #1: LightOne qRED qRTPCR data	28.37	1.00E+03	IL-6	SYBR
D1, D2, D3	plate #2: Control qRTPCR data	28.58	1.00E+03	IL-6	SYBR
E1, E2, E3	plate #1: LightOne qRED qRTPCR data	31.94	1.00E+02	IL-6	SYBR
E1, E2, E3	plate #2: Control qRTPCR data	32.10	1.00E+02	IL-6	SYBR

### Remarks:

Expt.1: PCR setup was done illuminated with a 60W incandescent light blub (yellow light) and WITH the aid of LightOne qRED.

Expt. 2 (Control Experiment): PCR setup was done illuminated with a 60W incandescent light blub (yellow light)  
See back for graph view

\* Data from the laboratory of Dr. Lena Gerwick, Scripps Institution of Oceanography, UC San Diego